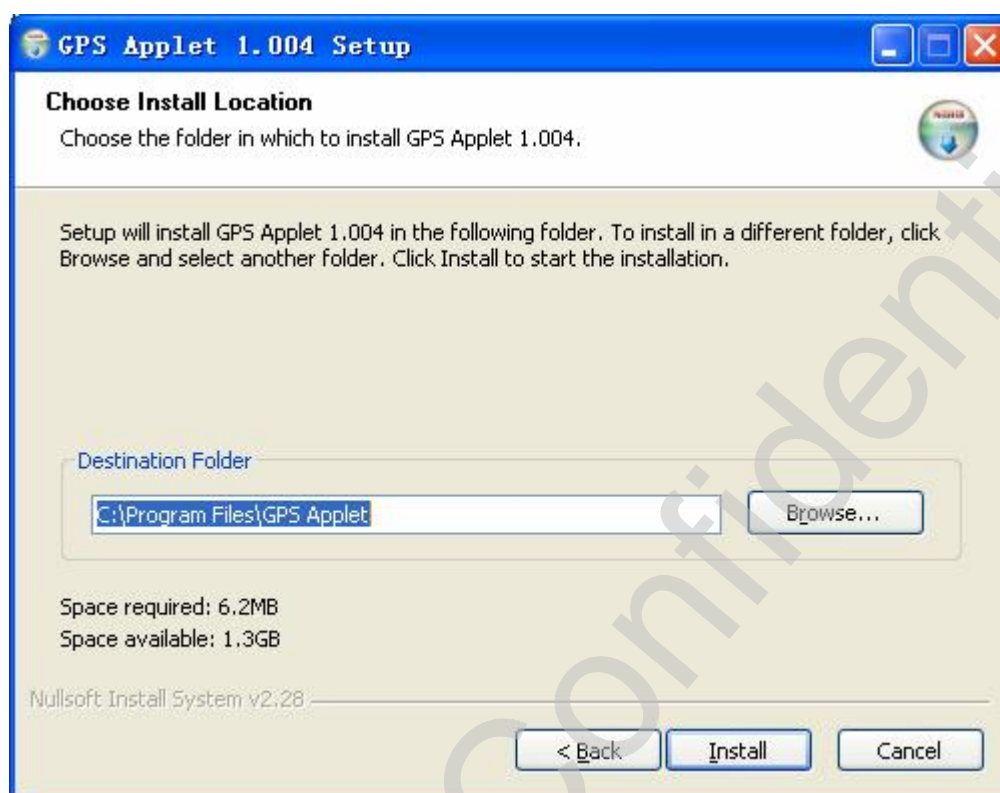


1. In order to use the GPS Applet tool, you should connect data card with PC, and make sure that drivers have been installed.

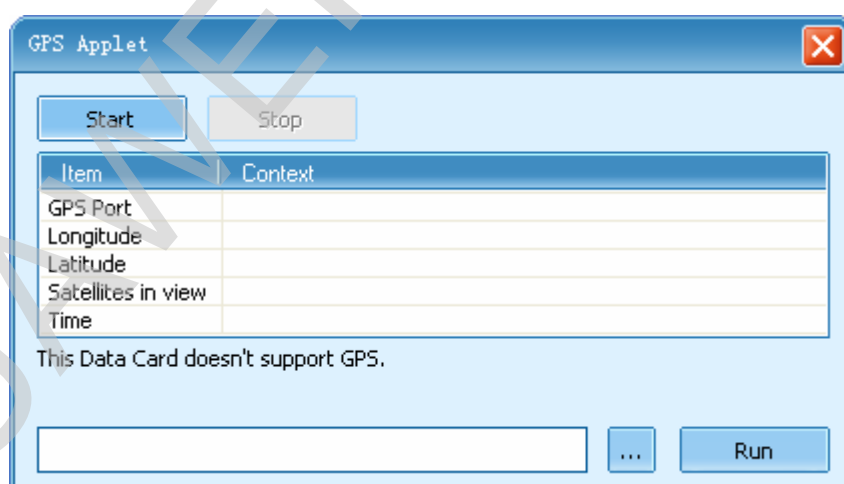
2. Please double click the tool `GPS_Applet_1.004_Setup.exe` to install. the below running screen will be pop-up. Then click the button “Next” to continue.



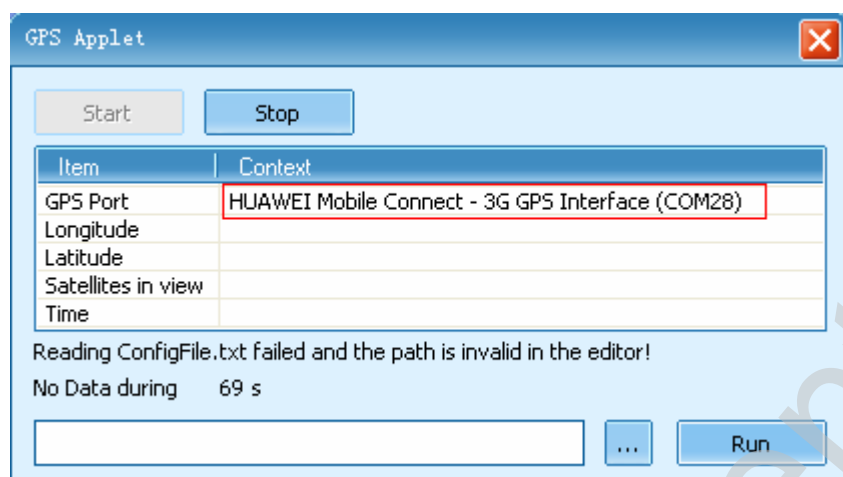
3. If you want to change the installed path, please click the button “Browse...”. Then click “Install” to complete install.



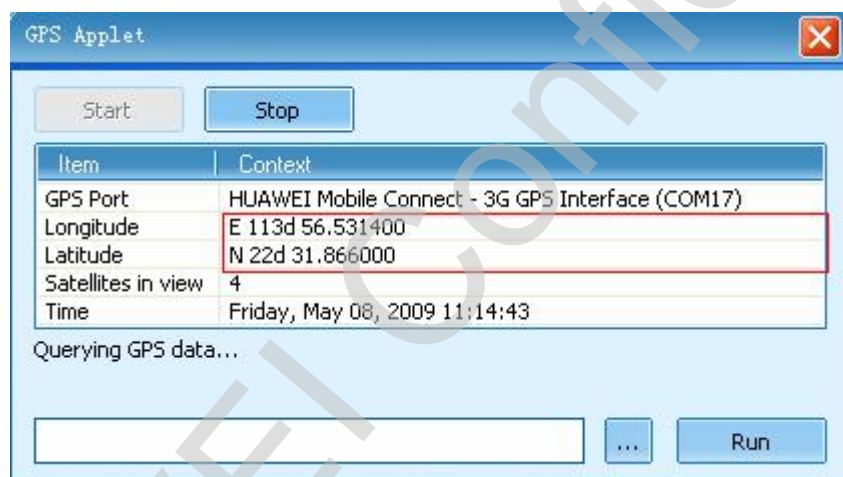
4. When you have installed the tool, you can run it and the screen will be pop-up like below. You can click the button “start” or “stop” to start or stop GPS application.



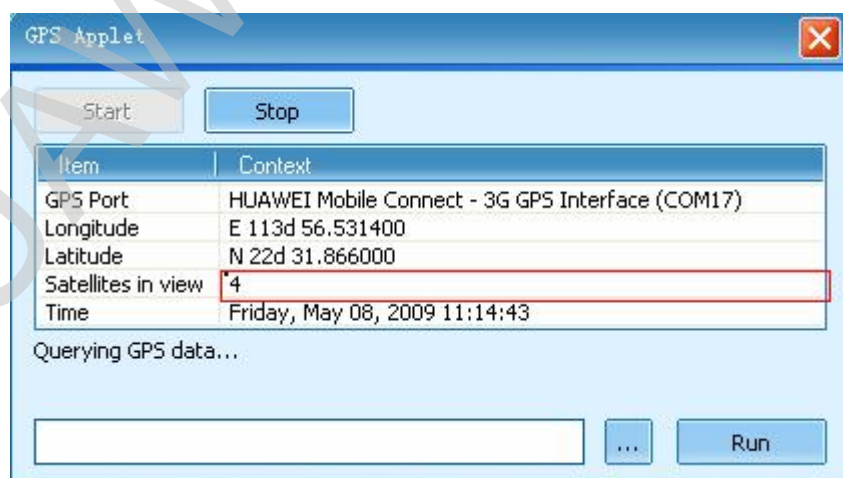
5. This is the GPS port of Huawei data card.



6. There show the longitude and latitude which read from the data card.



7. There show the number of satellites.



8. If you want to run the third part software, please click the button “...” chose the path of

software, then click “Run” to start it.

